

# The 10 strengths of TeleControlNet



## ► The 10 strengths of TeleControlNet

TeleControlNet is a SaaS that connects remote processes to a web based server for central control and data analyses via the cloud.

For a quick scan, see below for the 10 strengths of TeleControlNet.

### ► 1. Connecting cross-systems

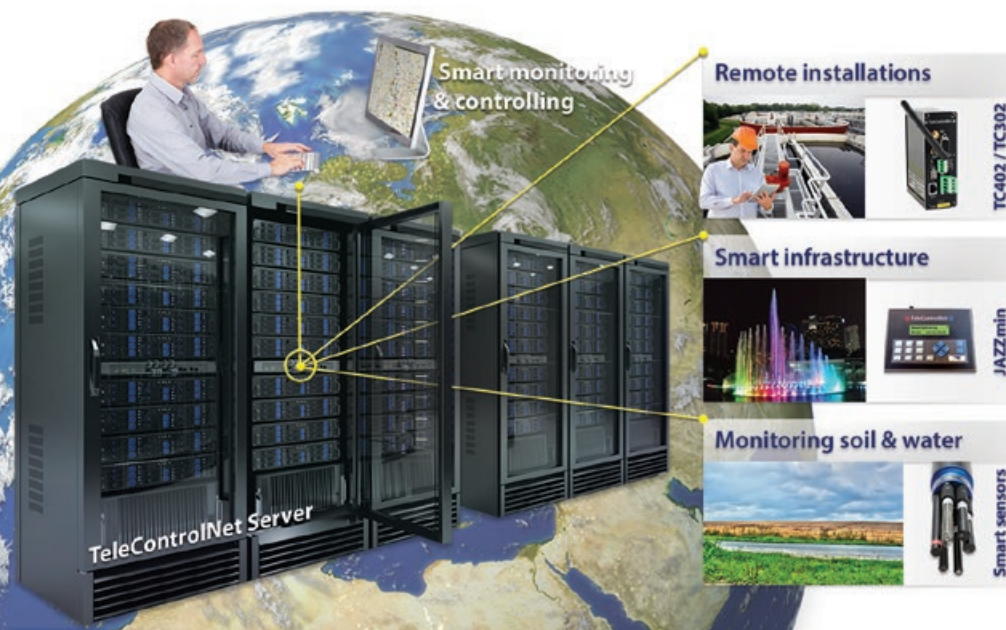
To connect remote processes to the central TeleControlNet server, Inter Act has developed a series of smart modems called TeleControllers. The TeleControllers collect data from remote processes (often PLC'S). The collected data has small log intervals and the data can be validated in-line. TeleControllers communicate with the server via mobile networks.



*TeleControllers to connect remote processes*

### ► 2. Quality process data

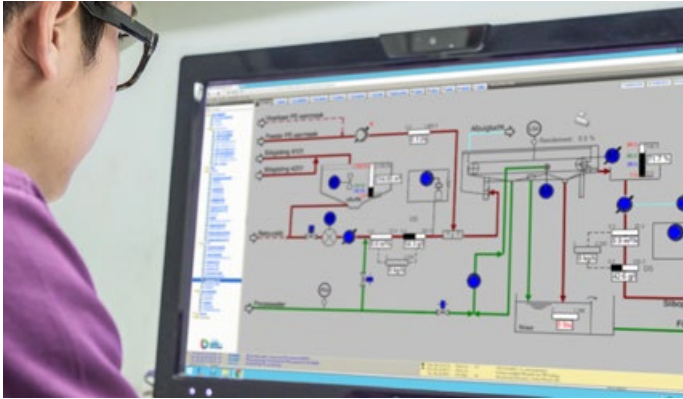
The TeleControlNet server has long-term storage database. Processing big data into information requires a big source of quality data, and that is exactly what the TeleControlNet server offers. Generating smart dashboards is currently in the spotlight at many specialist companies.



*TeleControlNet server connects remote locations*

### ► 3. Built-in WEBscada

TeleControlNet has a web-based scada function for remote process control. The WEBscada performance is similar to conventional scada packages. With the TeleControlNet App you can control installations on your smartphone or tablet. Control is at your fingertips, wherever you are and whenever you need.



*Always in control, wherever you are*

### ► 4. Stay in control with smart dashboards

Modern society becomes more and more “data-generating”.

To keep it all under control your attention is required at all times.

The TeleControlNet server collects measured data and generates real time management dashboards. It also acts as a central data hub to provide others with information.



## ► 5. Forecasting stoppage and events

TeleControlNet forecasts process events and failures. The historical trend data that is available in TeleControlNet can be processed to predict events. TeleControlNet has standard forecaster dashboards available for (sewage) water pumps. The forecaster predicts potential equipment failures and enables prescriptive maintenance, and that saves money.

More advanced forecasting functions will be developed by working together with external process experts.



*TeleControlNet forecaster dashboard predicting pump stoppage*

## ► 6. Rule based control

The live status of all remote installations and measuring locations is available in TeleControlNet. It may be desirable that measuring locations automatically can influence installations at other locations.

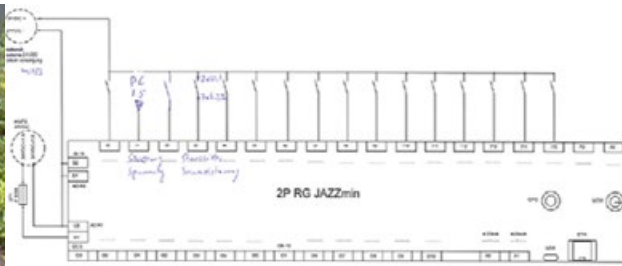
For this purpose TeleControlNet has a rule-based-control-module that can be configured by external process experts. They understand their processes and they might be in the position to define control rules, leading towards more efficiency. In combination with the forecaster, even predictive parameters can be added to the rules.



*Rule-based-control determines automatically the next command.*

## ► 7. Built-in assets maintenance tool

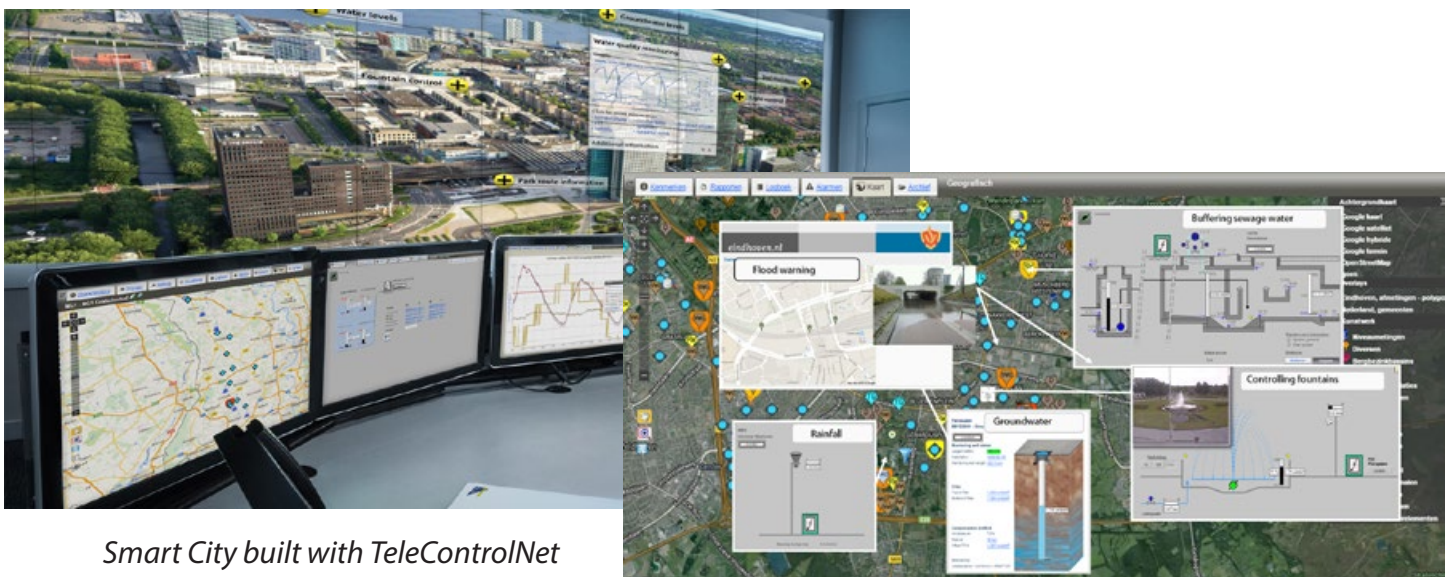
TeleControlNet has an integrated maintenance reporting tool for reporting and managing maintenance activities on remote objects. Maintenance engineers fill out preconfigured reports and upload them into the central long-term storage database. The reports can be consulted at any time and by anyone authorised to access TeleControlNet.



*Rule-based-control determines automatically the next command.*

## ► 8. Ahead with Smart Cities

Inter Act is ahead of competition with implementing Smart Cities. With our "off-the-shelf" products, cities of today can be turned into Smart Cities of tomorrow. Users of TeleControlNet go "step-by-step" through a "makeover" process without taking high risks or making large investments.



*Smart City built with TeleControlNet*

## ▶ 9. TeleControlNet is the biggest in its form

More than 20.000 objects are connected to the TeleControlNet SaaS.

TeleControlNet controls and monitors:

- Waste water plants
- Drinking water plants
- Drinking water grid monitoring
- Weather systems
- Surface water monitoring
- Flood warning,
- Groundwater monitoring
- Production process monitoring
- Biogas production
- Remote stock monitoring
- Etc.

## ▶ 10. Robustness through 15 years of development

Inter Act is involved in telemetry from its first introduction. It started more than 15 years ago with adding telemetry to (sewage) pumping stations and other water applications.

Step by step new functions were implemented in telemetry. Gradually also industrial systems and production plants have been connected to TeleControlNet. Meanwhile TeleControlNet has evolved into a (managed) industrial Internet of Things system.





### **Inter Act**

Dijkgraafweg 16 - 7336 AT Apeldoorn - The Netherlands

Tel.: +31 (0)55 534 2002

Fax: +31 (0)55 534 2010

E-mail: [info@interact.nl](mailto:info@interact.nl)



### **Inter Act smart solutions**

Chroomsteden 16 - 7547 TL Enschede - The Netherlands

Tel.: +31 (0)55 534 2002

Fax: +31 (0)55 534 2010

E-mail: [info@interact.nl](mailto:info@interact.nl)



### **Inter Act Germany**

Stadtring 17 - D-48527 Nordhorn - Germany

Tel.: +49 (5921) 72 76 804

Fax: +49 (5921) 72 76 805

E-mail: [info@interact-automation.de](mailto:info@interact-automation.de)



### **Inter Act smart solutions**

Office No. 135-FD, Incubator Building, Level 1  
Masdar City, Abu Dhabi, United Arab Emirates

E-mail: [info@interact.nl](mailto:info@interact.nl)

